

## RBI GEOTRAQ IRIS – DIGITAL ROADBOOK – GPS SAFETY SYSTEM Mounting Instructions - Operation Manuals

Dear Teams and Competitors,

Organizers of 2024 Baja Greece present to you the brand-new technology of Digital Roadbook named “IRIS” delivered by RBI-Geotraq.

“IRIS” system fully complies with FIA NAV-GPS regulations but most important provides an upgraded and friendly experience to the co-drivers making their task simple as never before.

No external antennas, no complicated fitting process. “IRIS” system follows the principal “plug and play” by using a powerful software and sophisticated GPS module.

In 2024 Baja Greece the use of “IRIS” system is provided without any additional fee since the rental cost is included in Entry Fee.

A refundable deposit will be asked during administrative checks and/or the delivery of “IRIS” system as per Art.10.3 of Supplementary Regulations of Baja Greece.

In order Competitors to get familiar with the installation and operation of “IRIS” system a briefing is scheduled according to Art.3 of Supplementary Regulations, thus on **Wednesday 22 May 10:00-10:30 hours**. The presence of Competitors is not obligatory but is strongly recommended.

Competitors will have the opportunity to use by themselves “IRIS” system during Private Test session and Shakedown so to be fully ready for Prologue and Stages 1 and 2.

RBI-Geotraq representatives will be always at Competitors’ disposal for any further assistance.

Organizers reminds competitors that according to Art.11.8 of Supplementary Regulations, hardcopy roadbook will be delivered for Private Test session, Shakedown, Prologue, Stages 1 and 2 for the unlike circumstance of system failure.

If needed, an additional communication by Organizers will be given to competitors regarding “IRIS” system and hardcopy roadbook delivery.

Organizers reminds competitors that an additional GPS Safety system will be also delivered. This system named “ComBox” is also supplied by RBI-Geotraq and provides real-time surveillance of all competitors and in addition the function “car-to-car” communication for overtakes.

Competitors are advised to see Appendix 5 of Supplementary Regulations regarding installation and manual for “ComBox”.

Organizers of Baja Greece and RBI-Geotraq are joining their efforts so Competitors to enjoy the event by using a cutting-edge technology that upgrades safety and fun.

Our motto,

Safety, Traditional Greek Hospitality, Motorsport Spirit.



# **DIGITAL ROADBOOK AND NAV-GPS**

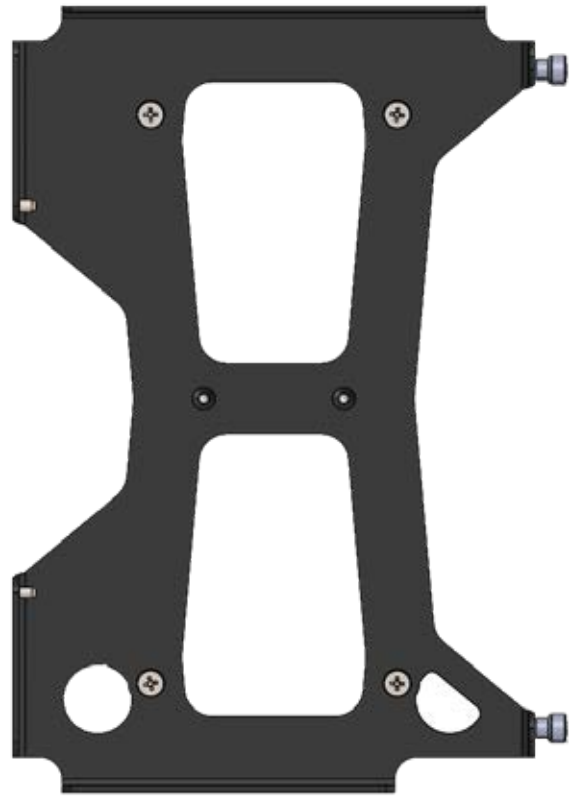
## **MOUNTING INSTRUCTIONS**

# IRIS - COMPONENTS

IRIS device



Mounting bracket



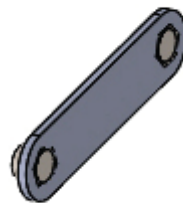
Bluetooth  
Remote control



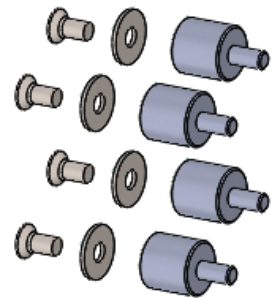
Power cable



Cable clamp



Rubber mounts



# FITTING TO DASHBOARD

Dimensions of the holes:

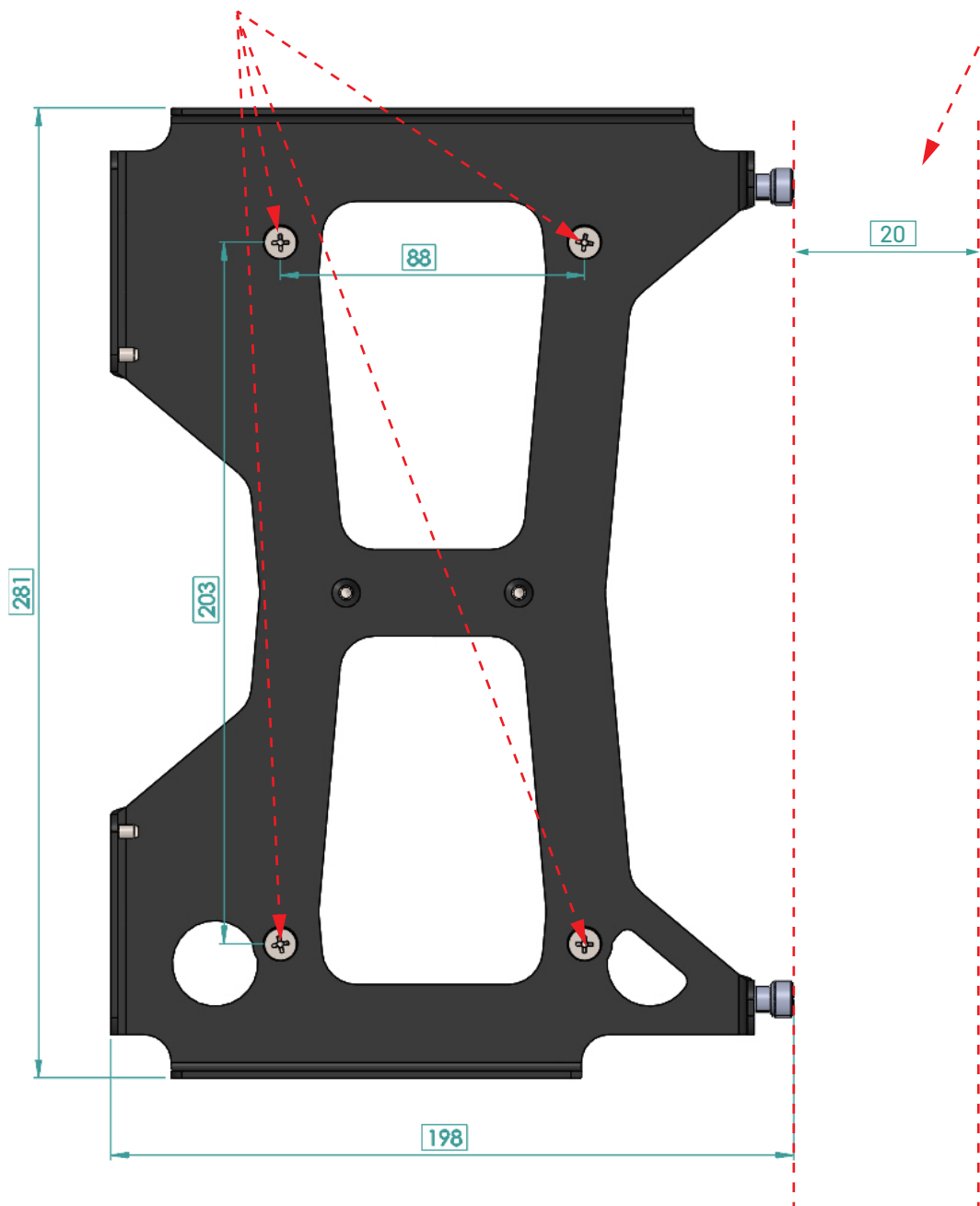
Vertical spaces between axes: 203 mm

Horizontal spaces between axes: 88 mm

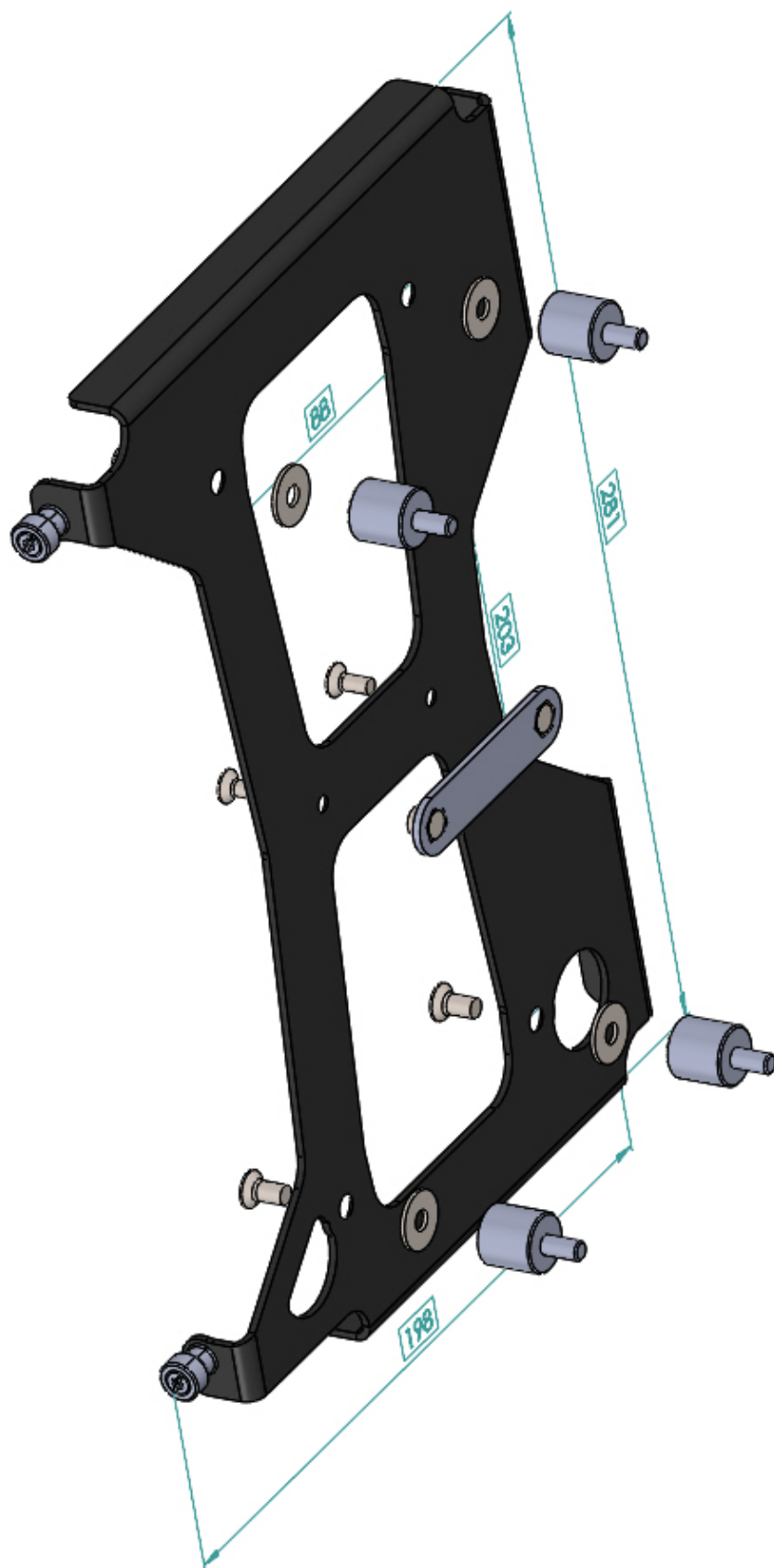
Using the supplied fittings, fix the bracket to dashboard in Portrait orientation:

**Important!**

Minimum clearance of 20 mm on the right side



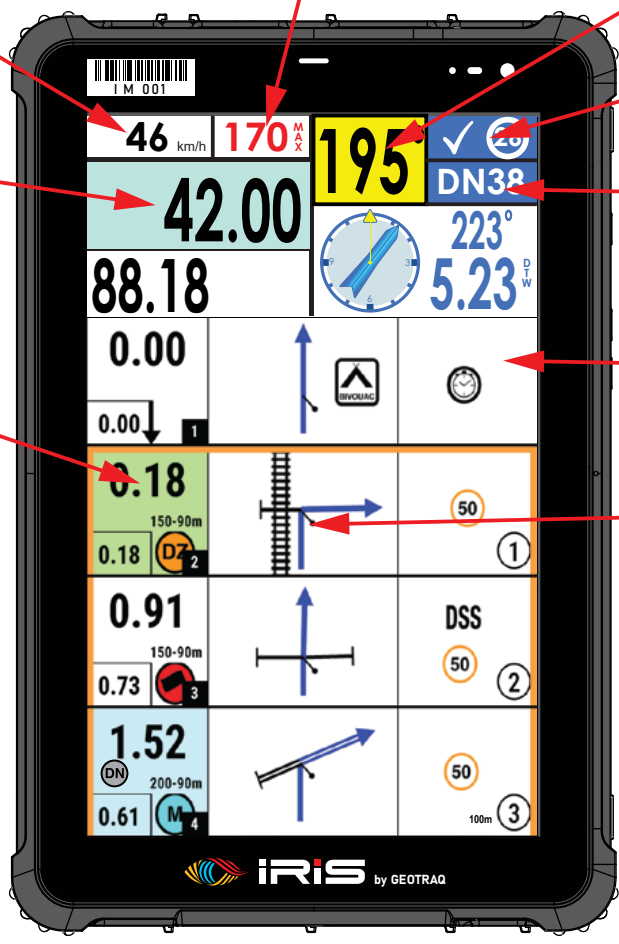
# FITTING TO DASHBOARD



# FITTING TO DASHBOARD



# TOUCH SCREEN



Press and hold for  
**Lock/Unlock**  
the touch screen

Press and hold for  
**Edit Odometer Window**

Press and hold for  
**Manual Calibrating**  
**Total Odometer**

**Global Top Speed**

Press and Hold  
to **Unlock ALL WP**

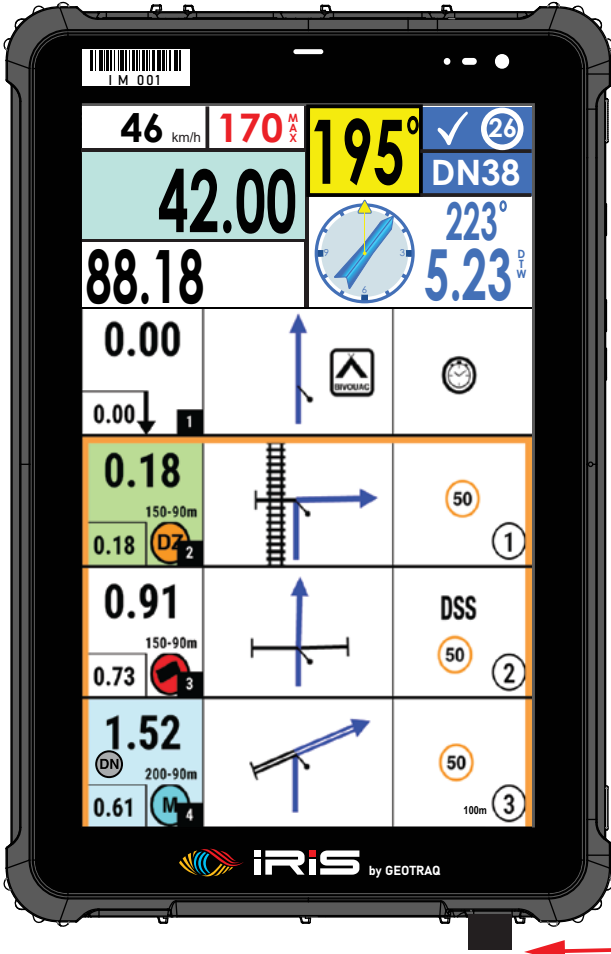
Press for **Stage Overview**  
Swipe down from top to **EXIT**

Press for  
**Settings**

Press and Hold for  
**FIA Lexicon**

Press and Hold to  
**Bookmark Tulip**

# SIDE BUTTONS



Press for **WP +**

Sleep Screen

Press for **Total ODO +**

Press for **Total ODO -**

Press for **WP -**

Charging connector





# RALLY SAFETY SYSTEM INSTALLATION MANUAL



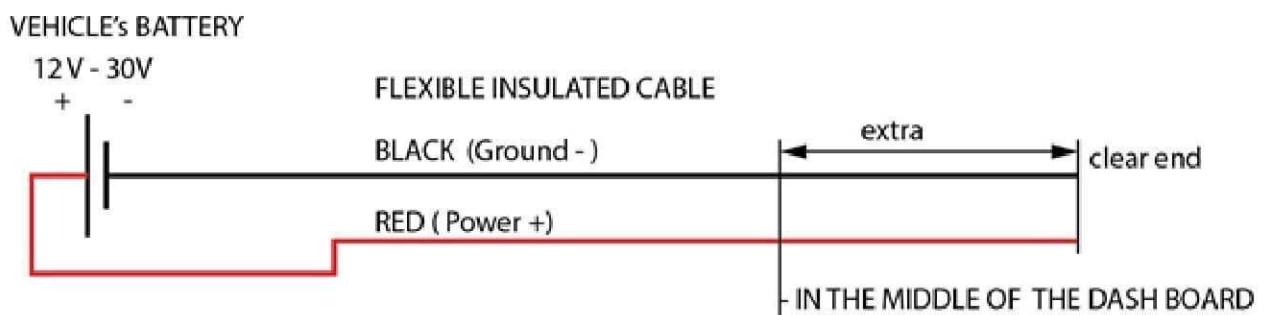
## SYSTEM COMPONENTS

- **GPS Tracker** - 73x73x27mm (WxHxD). Installed at the A-pillar roll-cage using cable ties or at the dashboard using double sided tape.
- **Com-box** - 73x73x27mm (WxHxD). Installed via slip and clip in the supplied metal Base / Mount bracket.
- **Base / Mount bracket** - 75x74x26mm (WxHxD). Installed on the dashboard by means of screws, cable ties or double sided tape.



*The Base / Mount bracket is supplied by the Geotraq team at the administrative check and remains property of the competitor after the event.*

## POWER SUPPLY



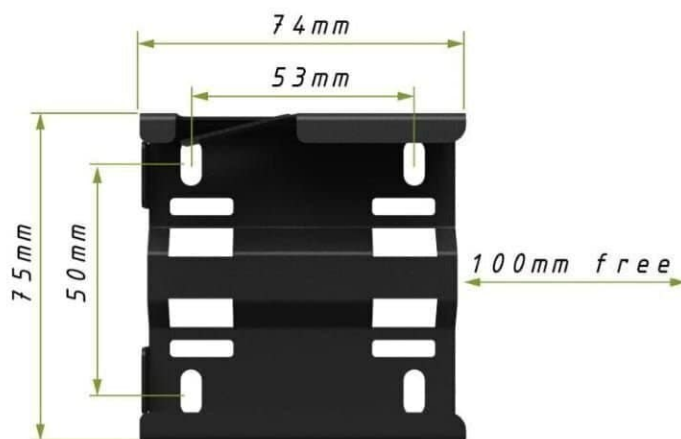
- The power cord must be connected directly to the battery. The Master cut-off (kill) switch must not interrupt the power supply to the system.
- The cabled used must be “flexible” (multi wire), insulated cable – 2x1 mm<sup>2</sup> or 2x1.5 mm<sup>2</sup> – Red and Black coloured (if possible).
- A 3A fuse (responsibility of the competitor) should be connected to the positive wire.

- The end of the power cord must be located as per the instructions at the top of the dash board or under it with easy access.
- The power cord must be prepared in advance and connected to the vehicle's battery when the vehicle is presented for scrutineering.
- Electrical details: voltage 6-30V DC, Nominal voltage 12V, Energy consumption (at 12.6V) 110 mA r.m.s.

*Leave the power cord in place with at least 10 cm to spare for easy handling.*

## BASE / MOUNT BRACKET

- The Base / Mount bracket can be attached to the dashboard or to the roll-cage.
- The fitting can be done via screws, cable ties and double sided 3M tape. It is the responsibility of the competitor to prepare and mount the Base / Mount bracket before the vehicle is presented for scrutineering.



*At least 10 cm of space must be left on the sliding side of the Base / Mount bracket to allow the installation of the Com-box.*

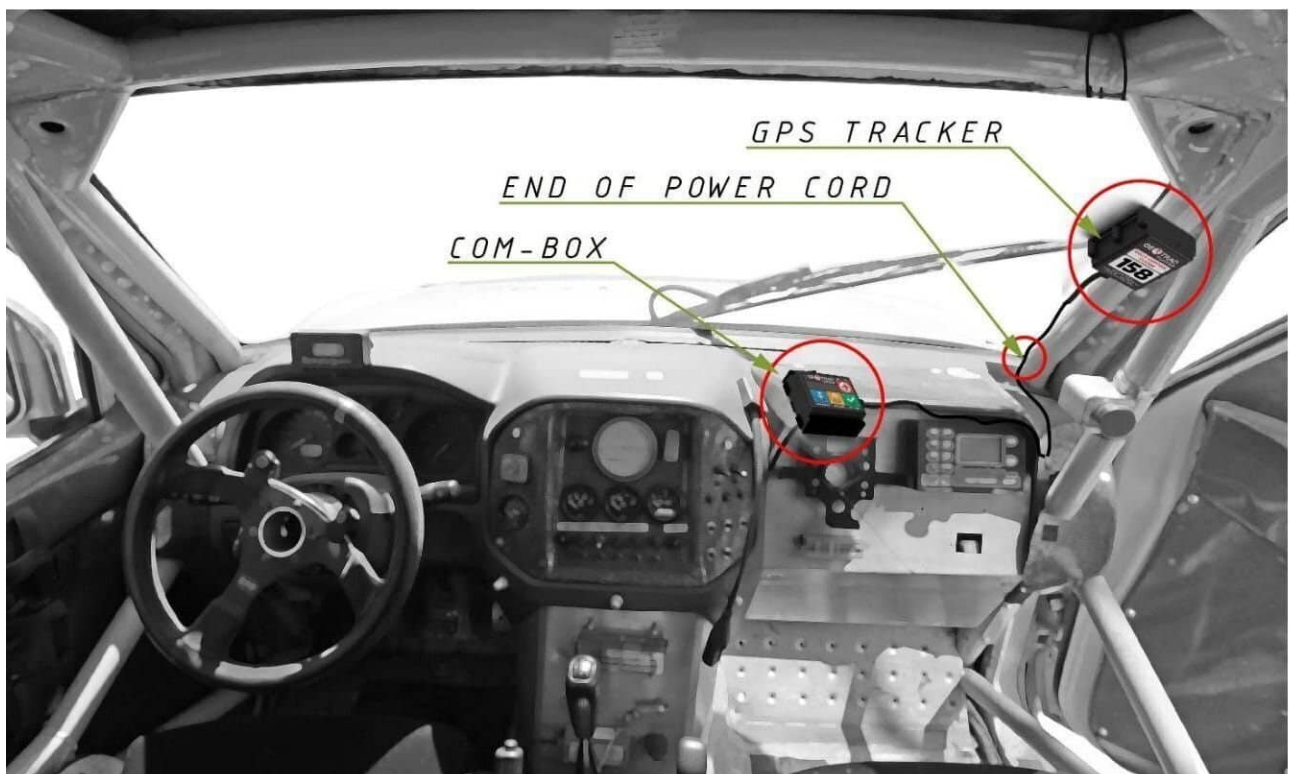
## POWER CONNECTORS

- The power cord must be equipped with **FULLY INSULATED FEMALE Crimp Spade Terminal Connector** – 6.3 x 0.8 mm. The Geotraq team will install the required terminals to the ready power cords.



## INSTALLATION LOCATION

The Com-Box must be visible and accessible to the drivers even when they are sitting with the seatbelts buckled.





Appendix 6 Instructions for the use of the car-to-car communication system

**GEOTRAQ COM-BOX** **OVERVIEW**

**BATTERY STATUS**

- EXTERNAL POWER
- NO EXTERNAL POWER
- (BLINKING) INT. BATTERY EMPTY

**RADIO STATUS**

- RADIO OK
- SLEEP MODE, NO RADIO

**OVERTAKE FUNCTION**

**DANGER BEACON**



**EMERGENCY SOS BEACON**

- PRESS AND HOLD UNTIL ACTIVATED

**CONFIRM / QUIT BUTTON**

**GEOTRAQ COM-BOX** **OVERTAKE FUNCTION**

**Vehicle A wants to overtake:**  
 press for 2 seconds the **BLUE BUTTON**  
 to send a signal to the vehicle ahead  
 (less than 200m).

**Signal is received when lights are SOLID YELLOW.**  
**Signal is not received if light BLINK YELLOW.**  
 Cancel/repeat the function with OK/QUIT button.





Vehicle B is being overtaken:  
 Lights **BLINK BLUE**



**CONFIRM OVERTAKING WITH BLUE BUTTON !**  
 (will allow overtaking at the first safe place)

**DECLINE OVERTAKING WITH OK/QUIT BUTTON**



Vehicle A receives confirmation for overtaking:  
 Lights **ARE SOLID GREEN**, vehicle B will allow  
 overtaking at the first safe place.

**CONFIRM WITH OK/QUIT BUTTON (optional)**





If you breakdown in a danger place (after bling turn) or if drive against the route, activate **"DANGER BEACON FUNCTION"**.

You will be sending signal to the competitors maximum 200 meters around you to inform them. **DEACTIVATE WITH "OK/QUIT" BUTTON**



**RALLY CONTROL** can send you an **"REQUEST"** to ask for your status.

**REPLY WITH THE 3 AVAILABLE OPTIONS:**

- SOS - activates SOS FUNCTION
- DANGER - activates DANGE FUNCTION
- OK / QUIT

Doing this **RALLY CONTROL** will know your current status and will act accordingly.





If you receive a SOS signal from Lights will **BLINK RED. ALARM IS ON.**  
**CONFIRM WITH OK/QUIT BUTTON AND BE READY TO ASSIST AN ACCIDENT SCENE.**



If you **REQUIRE MEDICAL ASSISTANCE,**  
**PRESS AND HOLD SOS BUTTON TO ACTIVATE FUNCTION.**  
 You will be sending signal to the competitors maximum 200 meters around you to inform them.  
**Also signal is transmitted directly to Rally Control.**  
**DEACTIVATE WITH "OK/QUIT" BUTTON**







If you receive a signal from **"DANGER BEACON"**,  
Lights will **BLINK YELLOW. ALARM IS ON.**  
**CONFIRM WITH OK/QUIT BUTTON AND REDUCE SPEED TO TAKE EXTRA CAUTION.**